

## Large-Scale Voting System & Conference Sign-in System



HCS-4393G2  
Contactless Conference  
Sign-in Machine



HCS-4368DTE/50  
Wired Voting Unit  
(Voting / LCD)

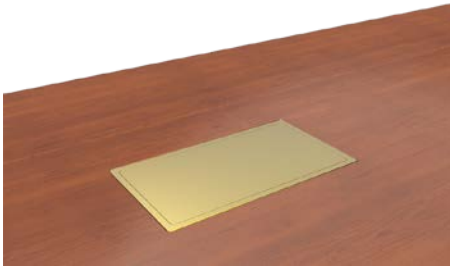


HCS-4368DME/FM/50  
Multi-Proposal Voting Unit  
Voting / LCD / Contactless IC Card

**Large-Scale Voting System & Conference Sign-in System**

<b>HCS-4368AD/FM Series Large-Scale Voting Units</b> .....	<b>7.2</b>
HCS-4368ADTE/FM_Gd/52      Fully Digital Voting System Delegate Unit (flush-mounting, 160x90mm, 3 voting keys, water and dust proof, antistatic 17000 V, silver face plate + golden frame, with cover)	7.2
HCS-4368ADFE/FM_Gd/52      Fully Digital Voting System Delegate Unit (flush-mounting, 160x90mm, 5 voting keys, water and dust proof, antistatic 17000 V, silver face plate + golden frame, with cover)	7.3
HCS-4368ADTSE/FM_Gd/52      Fully Digital Voting System Delegate Unit (flush-mounting, 140x64mm, 3 voting keys, water and dust proof, antistatic 17000 V, silver face plate + golden frame, with cover)	7.4
HCS-4368ADFSE/FM_Gd/52      Fully Digital Voting System Delegate Unit (flush-mounting, 140x64mm, 5 voting keys, water and dust proof, antistatic 17000 V, silver face plate + golden frame, with cover)	7.5
<b>HCS-4368DTE/FM_R/50 Fully Digital Voting System Delegate Unit (flush-mounting, 3 voting keys, 256x32 LCD, waterproof, antistatic 15000 V, cover, red)</b> .....	<b>7.6</b>
<b>HCS-48U6DVOTME Fully Digital Voting System Delegate Unit (flush-mounting, 3 voting keys, black)</b> .....	<b>7.7</b>
<b>HCS-4100MC/52 Fully Digital Congress System Main Unit (discussion, voting)</b> .....	<b>7.8</b>
<b>Application Software for Large-Scale Voting System</b> .....	<b>7.11</b>
HCS-4212/50      Professional Venue Design Software Module .....	7.11
HCS-4214/50      Voting Management Software Module (including delegate management, multiform voting, multi-proposal voting, less than 49 seats) .....	7.12
HCS-4221/50      Multi-User Conference Control Software Module .....	7.14
HCS-4222/50      Dual PC Server Hot Spare Software Module .....	7.14
HCS-4223/50      Agenda Control Software Module .....	7.15
HCS-4225/50      Dual System Main Unit Hot Spare Software Module .....	7.15
<b>Conference Sign-in System</b> .....	<b>7.16</b>
HCS-4393G2      Contactless Conference Sign-in Machine (1.2 m, the computer and the dual screen display adapter should be provided by the user) .....	7.16
HCS-3924S      Long-distance Contactless IC-Card (100 pieces of blank card, 98x67 mm) .....	7.16
HCS-3925S      Short-distance Contactless IC-Card (100 pieces of blank card, 98x67 mm) .....	7.16
HCS-3926      Contactless IC-Card (100 pcs/set, 86x54 mm) .....	7.16
HCS-4345NTK/80      Contactless IC-Card Encoder (black) .....	7.17
HCS-4345TK/50      Touched IC-Card Encoder (champagne panel + gray base) .....	7.18
HCS-3922E      Touched IC-Card (100 pcs/set) .....	7.18
HCS-4345NF/50      Fingerprint Scanner (Gray) .....	7.19
HVS-620P      Display adapter .....	7.19
<b>HCS-4217/50 Conference Sign-in Module</b> .....	<b>7.20</b>
HCS-4217/50S      Conference Sign-in Software Module (service) .....	7.20
HCS-4217/50C      Conference Sign-in Software Module (client) .....	7.20

## HCS-4368ADTE/FM\_Gd/52 Voting Unit



### Features

- **Flush-mounting, stylish and ergonomic design**
- **Max. system capacity: 4096 voting units**
- **3 voting keys**
- **Water and dust proof facility, equipped with cover to protect the unit from damage during the adjournment**
- **Supporting "PnP" (plug and play)**

### Functions

- Compliant to ISO 22259
- "Closed Loop - Daisy Chain" connection topology for a high operational system reliability: breakdown or replacement of a voting unit and connection failure of a cable will not influence other voting units
- New digital design, compliant to many international standards
- Voting system is resistive to 17 kV static, excels IEC CISPR 24
- Max system capacity: 4096 voting units
- Automatic system recovery and "PnP" (plug and play)
- 3 voting keys
- In combination with corresponding software modules, multiform voting can be implemented:
  - ◆ For/Against
  - ◆ Parliamentary: YES/NO/ABSTAIN
  - ◆ Appraisal:
    - Satisfied (three keys voting: satisfied/basically satisfied/unsatisfied) (two keys voting: satisfied/unsatisfied)
    - Qualified (three/two keys voting)
    - Competent (three/two keys voting)
- Key-press sign-in
- Automatic detection
- Water and dust proof design, compliance with IP65 protection degree
- Equipped with cover to protect the unit from damage during the adjournment

### Interconnections

- 1.5 m cable with 6P-DIN standard plug
- 0.6 m cable with 6P-DIN standard socket

### Technical Specifications

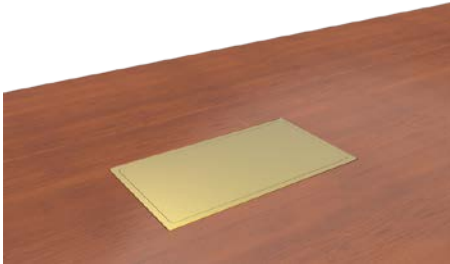
#### Mechanical

Mounting.....	Flush-mounting
Dimensions h x w x d (mm).....	62 x 160 x 90
Weight.....	0.6 kg
Frame Color.....	Silver face plate (PANTONE 428 C) + golden frame (PANTONE 134 C)

### Ordering Information

HCS-4368ADTE/FM\_Gd/52... Fully Digital Voting System Delegate Unit (flush-mounting, 160x90mm, 3 voting keys, water and dust proof, antistatic 17000 V, silver face plate + golden frame, with cover)

## HCS-4368ADFE/FM\_Gd/52 Voting Unit



- Key-press sign-in
- Automatic detection
- Water and dust proof design, compliance with IP65 protection degree
- Equipped with cover to protect the unit from damage during the adjournment

### Interconnections

- 1.5 m cable with 6P-DIN standard plug
- 0.6 m cable with 6P-DIN standard socket

---

### Technical Specifications

#### Mechanical

Mounting.....	Flush-mounting
Dimensions h x w x d (mm).....	62 x 160 x 90
Weight.....	0.6 kg
Frame Color.....	Silver face plate (PANTONE 428 C) + golden frame (PANTONE 134 C)

---

### Features

- Flush-mounting, stylish and ergonomic design
- Max. system capacity: 4096 voting units
- 5 voting keys
- Water and dust proof facility, equipped with cover to protect the unit from damage during the adjournment
- Supporting "PnP" (plug and play)

---

### Functions

- Compliant to ISO 22259
- "Closed Loop - Daisy Chain" connection topology for a high operational system reliability: breakdown or replacement of a voting unit and connection failure of a cable will not influence other voting units
- New digital design, compliant to many international standards
- Voting system is resistive to 17 kV static, excels IEC CISPR 24
- Max system capacity: 4096 voting units
- Automatic system recovery and "PnP" (plug and play)
- 5 voting keys
- In combination with corresponding software modules, multiform voting can be implemented:
  - ◆ For/Against
  - ◆ Parliamentary: YES/NO/ABSTAIN
  - ◆ Questionnaire: 1/2/3/4/5
  - ◆ Audience response: --/0/+/++
  - ◆ Parliamentary (NPPV): YES/NO/ABSTAIN/NPPV
  - ◆ Appraisal:
    - Satisfied (four keys voting: perfectly satisfied/satisfied/basically satisfied/unsatisfied) (three keys voting: satisfied/basically satisfied/unsatisfied) (two keys voting: satisfied/unsatisfied)
    - Qualified (four/three/two keys voting)
    - Competent (four/three/two keys voting)

---

### Ordering Information

HCS-4368ADFE/FM\_Gd/52... Fully Digital Voting System Delegate Unit (flush-mounting, 160x90mm, 5 voting keys, water and dust proof, antistatic 17000 V, silver face plate + golden frame, with cover)

## HCS-4368ADTSE/FM\_Gd/52 Voting Unit



### Features

- **Flush-mounting, stylish and ergonomic design**
- **Max. system capacity: 4096 voting units**
- **3 voting keys**
- **Water and dust proof facility, equipped with cover to protect the unit from damage during the adjournment**
- **Supporting "PnP" (plug and play)**

### Functions

- Compliant to ISO 22259
- "Closed Loop - Daisy Chain" connection topology for a high operational system reliability: breakdown or replacement of a voting unit and connection failure of a cable will not influence other voting units
- New digital design, compliant to many international standards
- Voting system is resistive to 17 kV static, excels IEC CISPR 24
- Max system capacity: 4096 voting units
- Automatic system recovery and "PnP" (plug and play)
- 3 voting keys
- In combination with corresponding software modules, multiform voting can be implemented:
  - ◆ For/Against
  - ◆ Parliamentary: YES/NO/ABSTAIN
  - ◆ Appraisal:
    - Satisfied (three keys voting: satisfied/basically satisfied/unsatisfied) (two keys voting: satisfied/unsatisfied)
    - Qualified (three/two keys voting)
    - Competent (three/two keys voting)
- Key-press sign-in
- Automatic detection
- Water and dust proof design, compliance with IP65 protection degree
- Equipped with cover to protect the unit from damage during the adjournment

### Interconnections

- 1.5 m cable with 6P-DIN standard plug
- 0.6 m cable with 6P-DIN standard socket

### Technical Specifications

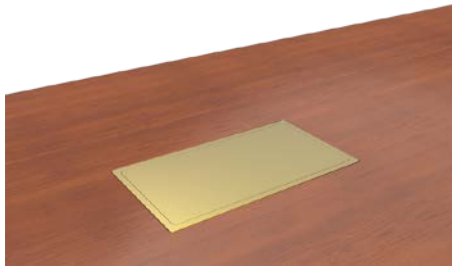
#### Mechanical

Mounting.....	Flush-mounting
Dimensions h x w x d (mm).....	62 x 140 x 64
Weight.....	0.5 kg
Frame Color.....	Silver face plate (PANTONE 428 C) + golden frame (PANTONE 134 C)

### Ordering Information

HCS-4368ADTSE/FM\_Gd/52\_Fully Digital Voting System Delegate Unit (flush-mounting, 140x64mm, 3 voting keys, water and dust proof, antistatic 17000 V, silver face plate + golden frame, with cover)

## HCS-4368ADFSE/FM\_Gd/52 Voting Unit



- Key-press sign-in
- Automatic detection
- Water and dust proof design, compliance with IP65 protection degree
- Equipped with cover to protect the unit from damage during the adjournment

### Interconnections

- 1.5 m cable with 6P-DIN standard plug
- 0.6 m cable with 6P-DIN standard socket

---

### Technical Specifications

#### Mechanical

Mounting.....	Flush-mounting
Dimensions h x w x d (mm).....	62 x 140 x 64
Weight.....	0.5 kg
Frame Color.....	Silver face plate (PANTONE 428 C) + golden frame (PANTONE 134 C)

---

### Features

- Flush-mounting, stylish and ergonomic design
- Max. system capacity: 4096 voting units
- 5 voting keys
- Water and dust proof facility, equipped with cover to protect the unit from damage during the adjournment
- Supporting "PnP" (plug and play)

---

### Functions

- Compliant to ISO 22259
- "Closed Loop - Daisy Chain" connection topology for a high operational system reliability: breakdown or replacement of a voting unit and connection failure of a cable will not influence other voting units
- New digital design, compliant to many international standards
- Voting system is resistive to 17 kV static, excels IEC CISPR 24
- Max system capacity: 4096 voting units
- Automatic system recovery and "PnP" (plug and play)
- 5 voting keys
- In combination with corresponding software modules, multiform voting can be implemented:
  - ◆ For/Against
  - ◆ Parliamentary: YES/NO/ABSTAIN
  - ◆ Questionnaire: 1/2/3/4/5
  - ◆ Audience response: --/-/0/+/>++
  - ◆ Parliamentary (NPPV): YES/NO/ABSTAIN/NPPV
  - ◆ Appraisal:
    - Satisfied (four keys voting: perfectly satisfied/satisfied/basically satisfied/unsatisfied) (three keys voting: satisfied/basically satisfied/unsatisfied) (two keys voting: satisfied/unsatisfied)
    - Qualified (four/three/two keys voting)
    - Competent (four/three/two keys voting)

---

### Ordering Information

HCS-4368ADFSE/FM\_Gd/52 Fully Digital Voting System Delegate Unit (flush-mounting, 140x64mm, 5 voting keys, water and dust proof, antistatic 17000 V, silver face plate + golden frame, with cover)

## HCS-4368DTE/FM/50 Voting Unit



### Features

- Flush-mounting, stylish and ergonomic design
- Max. system capacity: 4096 voting units
- 3 voting keys
- Waterproof facility, and equipped with ferromagnetic cover to protect the unit from damage during the adjournment
- Supporting "PnP" (plug and play)

### Functions

- Compliant to ISO 22259
- "Closed Loop - Daisy Chain" connection topology for a high operational system reliability: breakdown or replacement of a voting unit and connection failure of a cable will not influence other voting units
- New digital design, compliant to many international standards
- Voting system is resistive to 15 kV static, excels IEC CISPR 24
- Max system capacity: 4096 voting units
- Automatic system recovery and "PnP" (plug and play)
- 3 voting keys
- In combination with corresponding software modules, multiform voting can be implemented:
  - ◆ For/Against
  - ◆ Parliamentary: YES/NO/ABSTAIN
  - ◆ Appraisal:
    - Satisfied (three keys voting: satisfied/basically satisfied/unsatisfied) (two keys voting: satisfied/unsatisfied)
    - Qualified (three/two keys voting)
    - Competent (three/two keys voting)
- Graphic 256x32 LCD with back-lighting for displaying:
  - ◆ Delegate signed-in and voting results, etc
  - ◆ Messages (messages from system administrator to all or part of participants)
  - ◆ Multilingual (simplified/traditional Chinese and English, etc) menu
- Key-press sign-in
- Automatic detection
- Waterproof facility, and equipped with ferromagnetic cover to protect the unit from damage during the adjournment

### Interconnections

- 1.5 m cable with 6P-DIN standard plug
- 0.6 m cable with 6P-DIN standard socket

### Technical Specifications

#### Mechanical

Mounting.....	Flush-mounting
Dimensions h x w x d (mm).....	60 x 197 x 86 (plastic frame) / 60 x 197 x 91 (metal frame)
Weight.....	0.6 kg (plastic frame) / 0.8 kg (metal frame)
Frame Color.....	Silver (PANTONE 428 C) / Red (PANTONE 476 C) / Gold (PANTONE 132 C)

### Ordering Information

HCS-4368DTE/FM\_R/50... Fully Digital Voting System Delegate Unit (flush-mounting, 3 voting keys, 256x32 LCD, waterproof, antistatic 15000 V, cover, red)



## HCS-48U6DVOTTME Voting Unit



### Ordering Information

HCS-48U6DVOTTME.....Fully Digital Voting System Delegate Unit  
(flush-mounting, 3 voting keys, black)

### Features

- Flush-mounting, stylish and ergonomic design
- Max. system capacity: 4096 voting units
- 3 voting keys
- Supporting "PnP" (plug and play)

### Functions

- Compliant to ISO 22259
- "Closed Loop - Daisy Chain" connection topology for a high operational system reliability: breakdown or replacement of a voting unit and connection failure of a cable will not influence other voting units
- New digital design, compliant to many international standards
- Max system capacity: 4096 voting units
- Automatic system recovery and "PnP" (plug and play)
- 3 voting keys
- In combination with corresponding software modules, multiform voting can be implemented:
  - ◆ For/Against
  - ◆ Parliamentary: YES/NO/ABSTAIN
  - ◆ Appraisal:
    - Satisfied (three keys voting: satisfied/basically satisfied/unsatisfied)  
(two keys voting: satisfied/unsatisfied)
    - Qualified (three/two keys voting)
    - Competent (three/two keys voting)
- Key-press sign-in
- Automatic detection

### Interconnections

- 1.5 m cable with 6P-DIN standard plug
- 0.6 m cable with 6P-DIN standard socket

### Technical Specifications

#### Mechanical

Mounting.....Flush-mounting  
 Dimensions (h x w x d).....73 x 100 x 40 mm  
 Weight.....0.4 kg  
 Color.....Black (PANTONE 419 C)



## HCS-4100MC/52 Congress System Main Unit



### Features

- High system reliability guaranteed by “Closed Loop - Daisy Chain” connection topology
- Adopted fully digital audio transmitting technology between the main units and congress units
- Supporting 48 kHz and 32 kHz audio sampling rate
- Connection facility for an additional condenser or dynamic microphone, expanding user’s application spectrum
- Integrated USB interfaces for system upgrading and saving system parameters. Convenient for system maintenance
- TCP/IP communication protocol in PC control
- Remote control, remote diagnosis and remote update
- Voting facilities without PC intervention
- Built-in multi-channel intercom facility
- Plug and play for all units
- Excellent immunity to RF interference from mobile phones and comparable devices
- System power controllable by central control system

The Congress Main Unit includes features for controlling delegate microphones, and conducting voting sessions, without an operator. In combination with a PC, the main unit brings greater sophistication to conference control. Users can access an extensive range of software modules, each with a specific function in controlling and monitoring a conference, greatly expanding the capacity to manage a conference. In the event of PC failure, the main unit will revert to its stand-alone operation mode, enabling the conference to proceed.

### Functions

- Compliant to ISO 22259
- “Closed Loop - Daisy Chain” connection topology for a high operational system reliability: breakdown or replacement of a congress unit and connection failure of a cable will not influence other congress units
- System power controllable by central control system
- Embedded high performance DSP for audio signal processing, supporting 48 kHz and 32 kHz audio sampling rate

- Gain and EQ (5 band) of each microphone adjustable separately, fitting the individual orator’s voice to achieve perfect speech pickup any time
- Displays audio signal spectrum to determine howling frequency which can be suppressed by adjusting EQ parameters
- 2 audio line in or 1 audio line in + 1 microphone input: gain and EQ for each input adjustable separately, +24 V phantom power available at microphone input, a condenser microphone can be connected directly
- Unit offers connection facilities to HCS-8300 series multi channel audio input or output devices for versatile expansion of the system
- Based on TAIDEN originated MCA-STREAM digital audio processing and transmitting technology
- Adopted fully digital audio transmitting technology between the main units and congress units
- An ID can be assigned by default or manually to each conference unit bearing a unique serial number for convenient maintenance
- Set any delegate unit to be VIP unit, VIP unit can be activated as long as the total of active microphones is not beyond 6
- Built-in multi-channel intercom facility
- Connection facility for additional condenser or dynamic microphone, expanding user’s application spectrum (HCS-8300MI series audio input interface required)
- If additional contribution units are connected for system expansion, additional extension main units HCS-8300ME or HCS-8300ME/FS are required:
  - ◆ 4096 discussion or voting units
- Automatic video tracking implementation when cooperating with cameras, video switcher unit; preset positions on PC
- Implemented features in stand-alone mode:
  - ◆ Set the number (1/2/3/4) of delegates permitted to speak at the same time
  - ◆ Set-up of speaking time limitation (1~240 minutes)
  - ◆ Speak mode: OPEN/OVERRIDE/VOICE/APPLY/PTT
    - “OPEN” mode, microphone key with request-to-speak registration (AUTO)
    - “OVERRIDE” mode, microphone key control with override of the active microphones (FIFO)
    - “VOICE” mode, acoustic active sensitivity and automatic switch-off time can be adjusted continuously, built-in “flash-on” technology, immediate microphone activation on speaking
    - “APPLY” mode, delegate applies to speak by pressing apply key, delegate can speak only when operator or chairman approved his application
    - “PTT” mode, press microphone key to talk
  - ◆ Parliamentary voting (YES/NO/ABSTAIN)
- In combination with the corresponding software modules, more functions can be implemented:
  - ◆ Centralized microphone management
  - ◆ Multiform voting:
    - For/Against
    - Parliamentary: YES/NO/ABSTAIN
    - Appraisal:
      - ◇ satisfied
        - (Three keys voting: satisfied/basically satisfied/unsatisfied)
        - (Two keys voting: satisfied/unsatisfied)

- ✧ Qualified (three/two keys voting)
  - ✧ Competent (three/two keys voting)
- ◆ Several sign-in modes: entrance sign-in/seat sign-in
- ◆ Depending on the purchased HCS-4100/50 software modules, user has access to additional conference control & management functions
- Advanced TCP/IP communication protocol in PC controlled mode, easy to carry out remote control, remote diagnosis and remote update
- Hot spare dual server structure: another congress main unit is set up as backup main unit and connected to the system, takes over automatically if the main congress main unit fails
- Multi-room configuration: congress main unit(s) can be used as extension main unit(s) to carry out multi-room configuration flexibly. Multiple main unit configuration allows all connected multiple rooms to be operated either as one unique system or as independent systems
- Fully compatible with TAIDEN HCS-8300 series Digital Congress System: HCS-8300 series congress units can be connected to the HCS-4100/50 system, and HCS-4100/50 series congress units can be connected to the HCS-8300 system (exclusive functions only available with HCS-8300 contribution units).
- Built-in unit detection facilities: detect the unit's microphone, speaker, LEDs and voting keys prior to start of the meeting
- Automatic recovery facility, supporting "PnP" (plug and play)
- If the PC is broken down, congress main unit enters the stand-alone state automatically, carrying out basic conference control, ensuring the consistency of the conference

**Controls and Indicators**

- Graphic 256x32 LCD with back-lighting displays status and menu of the system configuration, supporting multi-language menu
- Four buttons for configuration
- Power switch
- Standby switch with indicator
- Operation mode indicators
- LINE IN electric level adjust knob
- Congress unit floor audio channel master volume adjust knob

**Interconnections**

- Multiple audio in/out interfaces:
  - ◆ One balanced XLR-F-type connector for microphone input or audio line in
  - ◆ Two symmetrical RCA input interfaces for audio line in
  - ◆ One balanced XLR-M-type connector for audio line out
  - ◆ Two symmetrical RCA output interfaces for audio line out
- 2 x RS232 port for connection to central control system and system diagnosis each
- 1 x RJ45 standard socket for connection to Ethernet interface (LAN)
- 1 x RJ45 standard socket (output) for connection with a congress extension main unit (EXTENSION)
- 2 x outlet (6P-DIN) trunk-line cable outlet
- Video switcher interface

- Emergency signal interface: for connection to public emergency system. Pauses the conference automatically if the system is switched on and sends alarm signals to congress units
- 2 x USB interface at front panel to upgrade system and to save system parameters

**Technical Specifications**

**Electrical**

Frequency response.....	30 Hz to 20 kHz
SNR.....	≥90 dBA
Dynamic range.....	≥90 dB
Isolation.....	≥85 dB
THD.....	≤0.05%
Power supply.....	AC 100 V-120 V 60 Hz or AC 220 V-240 V 50 Hz
Power consumption.....	200 W
DCS system supply.....	33 V DC, max 60 W per DCS socket
Total supply power.....	120 W
RS232 connection.....	2 x 9-pole Sub-D female socket

**Max. audio inputs**

LINE IN 1.....	+10 dBu, BAL.
LINE IN 2.....	+10 dBu, UNBAL.

**Max. audio outputs**

LINE OUT 1.....	+20 dBu, BAL.
LINE OUT 2.....	+20 dBu, UNBAL.

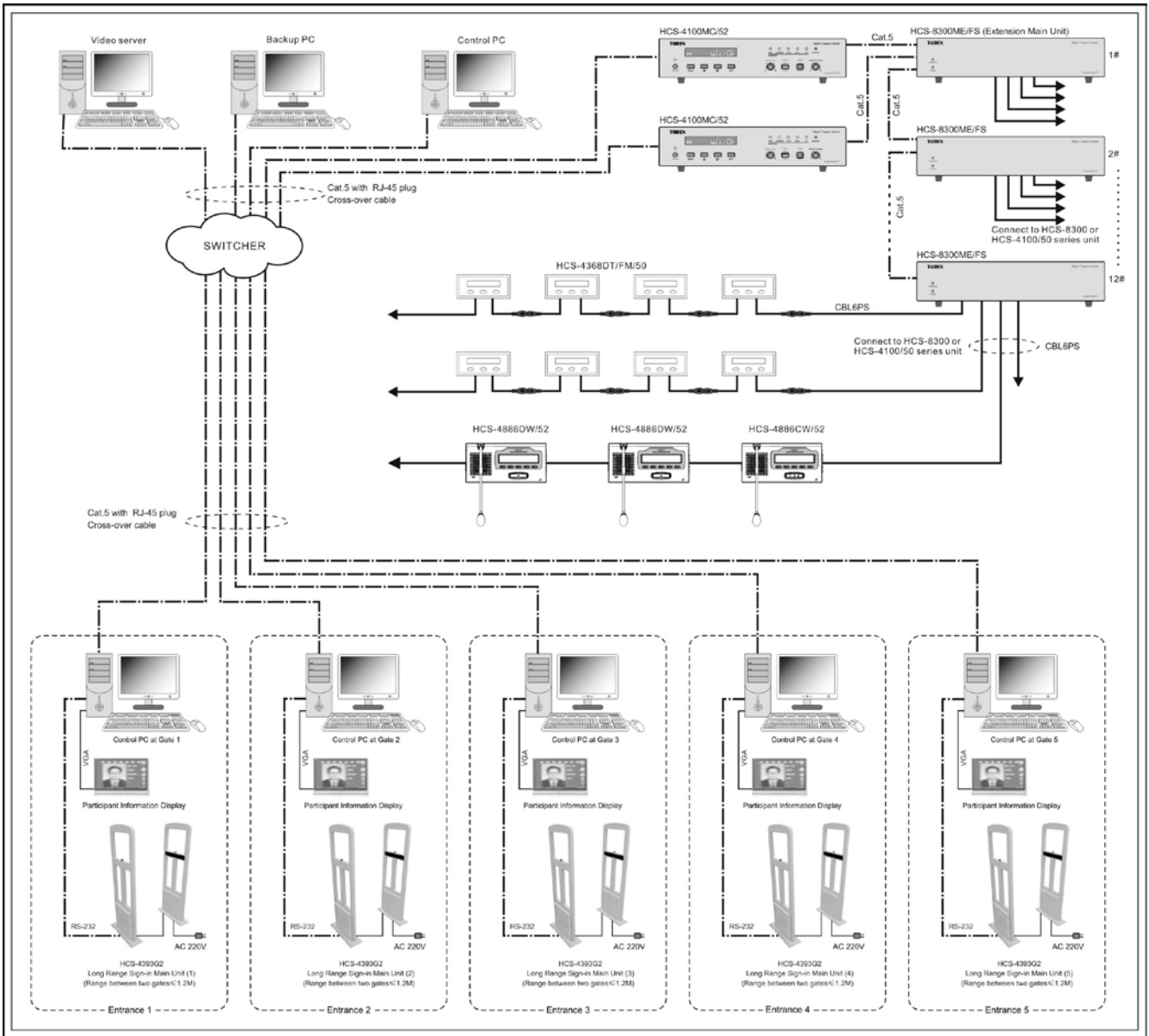
**Mechanical**

Mounting.....	Tabletop or mounted in a 19" rack
Dimensions (h x w x d)	
For table use, with feet.....	99 x 430 x 325 mm
For 19" rack use, with brackets.....	89 x 478 x 350 mm
Weight.....	7.8 kg
Color.....	White (PANTONE 420 C)

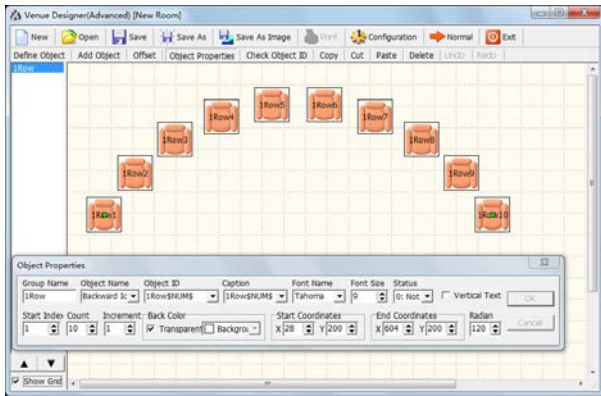
**Ordering Information**

HCS-4100MC/52.....	Fully Digital Congress System Main Unit (discussion, voting)
--------------------	--

**System Connection**



## HCS-4212/50 Professional Venue Design Module



Venue design (professional)

### Functions

In distinction from the normal edition of the Venue Design Module, the professional version has additional powerful functions to design manifold layouts of venues. The main difference is the availability of functional buttons for file operation (toolbar buttons) and object operation (buttons below toolbar buttons) in the toolbars. In addition, the functions are also available in the file right-click pop-up menu. Moreover, the Object Properties dialog box is floating on the window for fast changing the properties of current object.

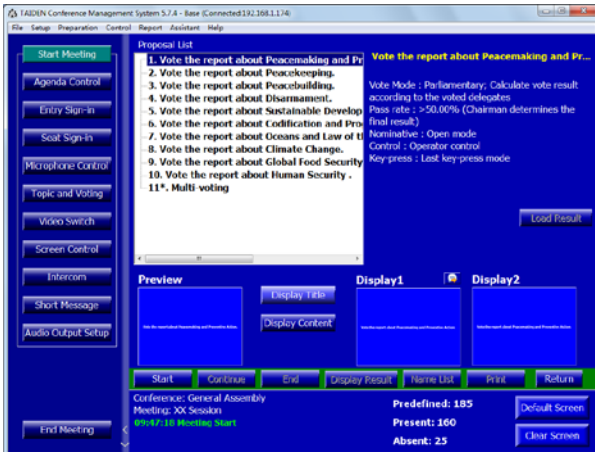
- File operation:
  - ◆ Venue design supports file operation, including: new, open, save as, and print
  - ◆ Create a new conference file: set the background color, room size and other parameters, including:
    - Background
    - Line number
    - Amount per line
    - Seat icon
    - Seat direction
    - Transparent icon or not
    - Show as MIC. icon or not
    - Re-arrange seat position or not
  - ◆ The parameters above can be changed at any time through "Configuration" menu on the toolbar
  - ◆ Add seat/microphone icons line by line, 8 seats/mics per line as default value. The amount of seats/microphones per line can be modified. While the normal edition can add only one seat at one go, the professional venue design module can add groups with more than one seat/microphone per group.
  - ◆ Shifting facility for complete layout
- Define object:
  - ◆ Picture library with default (customized and/or recurrent) objects
  - ◆ Modifiable object information, e.g. object name, image path, distinguishable colors for displaying object images in different states (e.g. signed-in etc.)

- Powerful "object properties" function: object attribute can be set and changed, including:
  - ◆ Set group name and object name
  - ◆ Set unique ID and ID display mode for every object, supporting different fonts and sizes
  - ◆ Set starting object status
  - ◆ Set a radian for the object group and design seat layout according to true seating positions
  - ◆ Set start index of the object group
  - ◆ Change the amount of the units in an object group
  - ◆ Set numbering increment
  - ◆ Set initial background color and whether transparent or not
  - ◆ Set start and end coordinates of object group
- Object ID check facilities
- Support object copy, cut, paste and delete operation
- Object arrangement can be changed

### Ordering Information

HCS-4212/50.....Professional Venue Design Module

# HCS-4214/50 Voting Management Module



Topics and voting



Delegate information



Display voting result



Unit arrangement

## Functions

Voting management, seat arrangement and delegate management sub modules.

### ■ Voting management:

- ◆ Topics information management
  - Set up, save, add or delete topics file before the meeting
  - Open topics control interface and display topics content to large screen
  - Printout the topics list and information and distribute to delegates as meeting information
  - Multiple voting facilities available, suitable for various conferences, including:
    - ◇ For/Against
    - ◇ Parliamentary: YES/NO/ABSTAIN
    - ◇ Appraisal:
      - satisfied (Three keys voting: satisfied/basicly satisfied/unsatisfied) (Two keys voting: satisfied/unsatisfied)
      - Qualified (three/two keys voting)
      - Competent (three/two keys voting)
  - Control modes: chairman control/ operator control/time controlled voting
  - Calculation: predefined or in relation to the participants attending the meeting in person
  - Register mode: nominative/ballot
  - Validity mode: first key press valid/last key press valid
  - Pass rate: between 1% and 100%
- ◆ Multi-proposal voting at one time (for HCS-4368DM/50 series)
- ◆ Display voting result to large screen
- ◆ Clear and vivid voting result display modes (numeric/bar/pie)
- ◆ Print or save voting result
- ◆ Sign-in before the voting to improve the security and validity of voting result



- **Seat arrangement** facility includes delegate seating and unit arrangement function modules
  - ◆ Delegate seating is used for assigning delegates' seats, e.g.:
    - Assign a single seat for each delegate
    - Section seating, automatic seat assignment for a group of delegates, supports new assignment – in parts or entirely
    - Clear a single seat if required for a new assignment
  - ◆ Unit arrangement: assign the conference units to the corresponding positions based on the true delegate seating, current cabling and layout:
    - Unit arrangement, assign the conference units to the true delegate seating
    - Delete unit, reassign the units
    - Locate seat position by menu operation
    - Operate the arranged units to check the arrangement
- **Delegate management** includes two sub-modules: delegate information and participants
  - ◆ Delegate information: create and manage the delegate's database
    - Edit delegate information: number, type, name, voting weight, leader (yes or no), presidium (yes or no) etc. Supports individual picture in the database
    - Customer-specific options for above items
    - Supports customized delegate grouping
    - Fast search facility
    - Database updatable
  - ◆ Participants: select the delegates to participate in the conference from the database
    - List delegate information by group or by delegate type
    - Group adding function
  - ◆ Delegate authority:
    - Degree: chairman or delegate
    - Authority: speak, vote and vote board

---

### Ordering Information

HCS-4214/50 .....Voting Management Software Module (including delegate management, multiform voting, multi-proposal voting)

## HCS-4221/50 Multi-User Console Module



The primary window of multi-user console

### Functions

If more than one operator is involved, a multi-user console is available for controlling speaking and voting, apart the system application software. A maximum of 5 multi-user consoles can be connected at the same time.

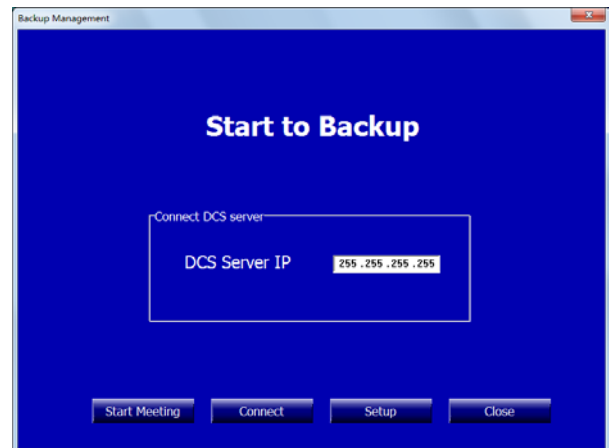
Basic conference control module:

- Microphone control
- Sign-in management
- Voting management
- Intercom
- Seat arrangement
- Proposal information
- Connect Server
- System parameters setup and download venue files from the server

### Ordering Information

HCS-4221/50 Multi-User Conference Control Management Module

## HCS-4222/50 Dual PC Server Hot Spare Module



Start to backup interface



Backing up interface

### Functions

HCS-4222/50 dual PC server hot-spares is a disaster protective structure. If the main operating computer breaks down during a conference, the backup computer immediately substitutes the main computer and continues conference management.

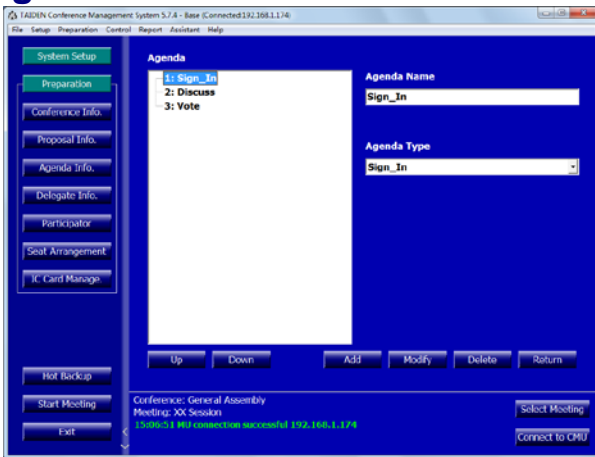
After connection to main operating computer, the backup console application first starts an automatic backup (incl. database and conference related information). If there is any change in the database, the backup console application will update backup automatically.

### Ordering Information

HCS-4222/50.....Dual PC Server Hot Spare Module



## HCS-4223/50 Agenda Control Module



Agenda information



Agenda control

### Functions

Agenda is a list of meeting activities in the order in which they are to be worked off. The agenda is prepared beforehand. It may include sign-in, voting and discussion. Agenda edit prepares all activities and their sequence to ensure convenience and a well arranged course of events. Agenda Management module consists of agenda information management and agenda control sub modules.

- **Agenda information management:** edit agenda content and sequence
  - ◆ Includes agenda name, agenda type and activity
  - ◆ Sequence of each activity can be adjusted - user can add, modify, delete an activity
- **Agenda control:** control the meeting process according to the pre-defined agenda content and sequence
  - ◆ Select an agenda from the agenda list and execute it
  - ◆ List the status of each agenda
  - ◆ Agenda can be edited, added, modified, or deleted during the meeting

### Ordering Information

HCS-4223/50 .....Agenda Control Module

## HCS-4225/50 Dual Conference Main Unit Hot Spare Module



Connect to CMU

### Functions

HCS-4100 dual main unit hot spare is a disaster protective structure. Besides the main unit, user can set another CMU as backup CMU and connect it to the system. If the main unit breaks down during the conference, the backup main unit will substitute the main unit and system software will connect to backup CMU automatically, ensuring consistency of the conference.

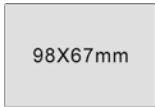
### Ordering Information

HCS-4225/50 .....Dual System Main Unit Hot Spare Module

## Conference Sign-in System



HCS-4393G2 Contactless Conference Sign-in Machine



HCS-3924S Long-distance Contactless IC-Card  
 HCS-3925S Short-distance Contactless IC-Card

### Features

- Contactless IC-Card sign-in machine
- Compatible with the sign-in software module HCS-4217/50
- Sensitive range: 1.2 m

The long-distance conference sign-in machine is based on the world's currently most advanced high sensitivity contactless IC-Card technology, featuring a long detection distance of 1.2-meter as its main benefit. The participant only needs to carry the card with him/her. Sign-in occurs automatically when passing the registration gate in turn, no need to present the card for status identification. Significantly improved sign-in speed (about 1000 persons per 15 minutes possible). When the participant passes through the gate, related information is displayed immediately on the monitor, including name, picture, as well as respective team, seat information etc. Sign-in cooperating with TAIDEN high speed large-scale voting system can provide a high-speed large-scale conference voting system solution.

### System Composition

- HCS-4393G2 Contactless Conference Sign-in Machine
  - ◆ Dimensions (h x w x d): 1520 x 540 x 100 mm
  - ◆ Weight: 29.0 kg
- HCS-4217/50S Server software
- HCS-4217/50C Client software
- HCS-4345NTK/80 Contactless IC-Card Encoder
- HCS-3924S Long distance contactless IC-Card 98x67 mm
- HCS-3925S Short distance contactless IC-Card 98x67 mm
- HCS-3926 Contactless IC-Card 86x54 mm
- Computer (with dual screen display adapter HVS-100P1)
- Server (with four screen display adapter HVS-620P)
- Large LCD display screen (optional)

### Ordering Information

- HCS-4393G2.....Contactless Conference Sign-in Machine (1.2 m, the computer and the dual screen display adapter should be provided by the user)
- HCS-3924S.....Long-distance Contactless IC-Card (100 pieces of blank card, 98x67 mm)
- HCS-3925S.....Short-distance Contactless IC-Card (100 pieces of blank card, 98x67 mm)
- HCS-3926.....Contactless IC-Card (100 pcs/set, 86x54 mm)

## HCS-4345NTK/80 Contactless IC-Card Encoder




---

### Features

- Encoding unit to produce the contactless IC-Card. The IC-Card may be used to grant access to a sign-in system
- PC connection via type A USB interface
- Smart design

---

### Technical Specifications

#### Interconnections

- Type A USB interface for connection to computer

#### Mechanical

Mounting.....Tabletop  
 Dimensions (h x w x d).....24 x 91 x 91 mm  
 Weight.....0.3 kg  
 Color.....Black (PANTONE 419 C)

---

### Ordering Information

HCS-4345NTK/80.....Contactless IC-Card Encoder (black)

## HCS-4345TK/50 Touched IC-Card Encoder



---

### Features

- Encoding unit to produce the touched IC-Card. The IC-Card may be used to grant access to a sign-in system
- PC connection via type A USB interface
- Smart design

---

### Technical Specifications

#### Interconnections

- Type A USB interface for connection to computer

#### Mechanical

Mounting.....Tabletop  
Dimensions (h x w x d).....66 x 84 x 121 mm  
Weight.....0.2 kg  
Color.....Champagne panel (PANTONE 401 C)  
+ gray base (PANTONE 424 C)

---

### Ordering Information

HCS-4345TK/50.....Touched IC-Card Encoder  
(champagne panel + gray base)

## HCS-3922E Touched IC-Card



---

### Features

- Touched IC-Card

---

### Ordering Information

HCS-3922E.....Touched IC-Card (100pcs/set)

**HCS-4345NF/50  
Fingerprint Scanner**



**Function**

- Cooperates with PC to take the delegate’s fingerprint to realize biometric authentication with high reliability
- PC connection via type A USB interface
- Smart design

**Technical Specifications**

**Interconnections**

- Type A USB interface for connection to computer

**Mechanical**

Mounting.....Tabletop  
 Dimensions (h x w x d) .....22 x 48 x 75 mm  
 Weight.....0.1 kg  
 Color.....Gray (PANTONE Warm Gray 10 U)

**Ordering Information**

HCS-4345NF/50.....Fingerprint Scanner (Gray)

**HVS-620P  
Display adapter**



**Features**

- Display type: GDDR5
- Memory capacity: 2GB
- Bit: 128 bit
- Maximum resolution: 5120x3200
- CUDA core: 512
- Heat dissipation: fan
- Maximum power consumption: 40 W
- I/O interface: 4xmini DisplayPort
- Transfer line :4xmini DP to HDMI
- Interface type: PCI Express 3.0 16 x
- Dimensions: 165x69 mm

**Ordering Information**

HVS-620P.....Display adapter

# HCS-4217/50 Conference Sign-in Management Module



Entrance sign-in system interface



Unit arrangement



Delegate information

## Functions

Conference sign-in, seat arrangement and delegate management sub-modules.

- **Conference sign-in** module consists of complex IC-Card and contactless IC-Card distribution and sign-in, IC-Card loss, IC-Card take back and sign-in server management. More facilities can be achieved in cooperation with the contactless IC-Card sign-in server
  - ♦ IC-Card distribution:
    - The IC-Card contains conference number, participant's number, identity, rights, etc.
    - Card authentication restricted to one conference facility. New authentication subject to IC-Card rewriting
    - Sign-in with backup card if master card is lost
  - ♦ IC-Card loss: report card loss. Cards counted for lost cannot carry out conference sign-in
  - ♦ IC-Card take back: when the conference is over, the cards used during the conference can be taken back, erased and rewritten for next use
  - ♦ Contactless IC-Card sign-in:
    - Entrance access control - delegate control right at conference start
    - Delegate sign-in speed-up and simplification
    - Client/Server structure of IC-Card sign-in machine and sign-in server, for system safety and reliability
  - ♦ Conference sign-in management: based on the venue design and delegate arrangement. Operator monitors a) venue setup, b) presence of participants and delegates, c) controls start/stop of sign-in by simply controlling open / close of sign-in server
  - ♦ Supports manual sign-in if participator's normal sign-in fails
  - ♦ Supports delegate absence management: absence is reported if delegate cannot attend the meeting
  - ♦ Supports displaying sign-in result to large screen, and supports multi display mode:
    - Seat map: indicates current sign-in status
    - Full screen digital display
  - ♦ Sign-in report: creates conference sign-in report based on the actual situation, and printout if needed. An amount of statistical data can be created simultaneously

- **Seat arrangement** facility includes delegate seating and unit arrangement function modules
  - ◆ Delegate seating is used to assign seats for the delegates, e.g.:
    - Assign a single seat for each delegate
    - Section seating, automatic seat assignment for a group of delegates, supports new assignment – in parts or entirely
    - Clear a single seat if required for a new assignment
  - ◆ Unit arrangement: assign the conference units to the corresponding positions based on the true delegate seating, current cabling and layout:
    - Unit arrangement, assign the conference units to the true delegate seating
    - Delete unit, reassign the units
    - Locate seat position by menu operation
    - Operate the arranged units to check the arrangement
- **Delegate management** includes two sub-modules: delegate information and participants
  - ◆ Delegate information: create and manage the delegate's database
    - Edit delegate information: number, type, name, voting weight, leader (yes or no), presidium (yes or no) etc. Supports individual picture in the database
    - Customer-specific options for above items
    - Supports customized delegate grouping
    - Fast search facility
    - Database updatable
  - ◆ Participants: select the delegates to participate in the conference from the database
    - List delegate information by group or by delegate type
    - Group adding function
  - ◆ Delegate authority:
    - Degree: chairman or delegate
    - Authority: speak, vote and vote board

---

### Ordering Information

HCS-4217/50S.....Conference Sign-in Software Module (service)

HCS-4217/50C..... Conference Sign-in Software Module (client)